



HAMILTON CONTE  
PARIS







# Storytelling

The Hamilton Conte collection is driven by narrative and inspired by stories. We connect to good stories, as they bring us joy. It is the same with our interiors and the objects that surround us. They can represent happy memories, while creating new moments in life that make us smile and feed the soul. Infusing our pieces with positive energy is our goal throughout the entire creative process. We are honoured to share our vision with you and hope that you will write your own interior story with Hamilton Conte.

*La collection Hamilton Conte puise son inspiration dans les histoires. Des liens émotionnels se nouent autour de nos histoires, ce qui nous apporte du bonheur. Cela va de pair avec nos intérieurs et les éléments qui les composent. Ils représentent des souvenirs heureux et créent des moments de vie qui importent et nourrissent l'esprit. Imprégner nos pièces d'énergie positive est notre préoccupation constante tout au long du processus créatif. Partager cette vision avec vous nous réjouit et nous espérons que vous écrirez l'histoire de votre propre intérieur avec Hamilton Conte.*



# Every Interior, a Story!

At Hamilton Conte, we believe your interior should tell your story, and the pieces you include should resemble you. Our interior aesthetic brings together a few key notions that are Eclectic, Relaxed, Handmade, Cosmopolitan, and Inspired. These fundamentals define the spirit of the brand and can help inspire you to create the story of your own interior.

*Chaque intérieur, une histoire. Chez Hamilton Conte, nous pensons que votre intérieur doit refléter votre histoire, et les objets qui s'y trouvent doivent être à votre image. Notre conception esthétique réunit quelques éléments essentiels qui sont Éclectisme, Détente, Artisanat, Cosmopolite et Inspiration. Ces fondamentaux encadrent l'esprit de la marque et peuvent vous inspirer afin d'écrire l'histoire de votre intérieur.*

## The Making of Hamilton Conte

Created in 2009, Hamilton Conte Paris is a furniture and home accessories brand that draws inspiration from our diverse cultural backgrounds and complementary talents. Combining pragmatism and passionate creativity, we do our best to approach our craft with originality and warmth.

Our creative process takes inspiration from a variety of styles and cultures and is centred on artisanal production and attention to detail. We like to merge design movements from the 1950s to 1970s, from the Americas and Scandinavia, and then add a touch of Parisian flair. Our collection offers all elements of an interior space, and a variety of materials and finishing options can make each piece highly personal.

There is a story behind each piece in our collection, and through their ensemble we try to create a universe that is distinct to the brand.

*Créée en 2009, Hamilton Conte Paris est une marque de mobilier et d'accessoires qui s'inspire de nos origines culturelles diverses et de nos talents complémentaires. Combinant pragmatisme et créativité passionnée, nous faisons de notre mieux pour aborder ce métier avec originalité et chaleur.*

*Notre démarche artistique s'articule autour d'une variété de styles et de cultures ainsi que sur une production artisanale et pointue sur les détails. Nous aimons fusionner les mouvements design des années 1950 à 1970, des Amériques et de la Scandinavie, et y ajouter une touche de style parisien. Notre collection offre tous les éléments d'un intérieur, et une diversité de matériaux et d'options de finitions permettent de personnaliser chaque pièce.*

*Chaque pièce de notre collection raconte une histoire et, à travers leur ensemble, nous essayons de créer un univers propre à la marque.*

Ross Hamilton Englisbe & Fabián Pellegrinet Conte



# Storytelling



Gold, metals, curves, diverse cultures, layering, and fun are all elements that can add storylines to your interior. Check out these storylines and many more on the ensuing pages.



Barnabas Sofa  
Génova Floor Lamp  
Génova Table Lamp  
Kameo Triple Wall Sconces  
Mántida Coffee Table



Barnabas  
Sofa

Reminiscent of the 1940s, the Barnabas sofa and armchair have curves in all the right places.



Barnabas  
Armchair



BEHIND  
THE  
SCENES

# GENOVA

lighting

The 14<sup>th</sup> century Genova lighthouse helped inspire this new range of lamps that will add visual interest to any space. Its brushed brass structure and suspended shade give a lovely soft light to warm any space. Available in table and floor lamp versions.

*Le phare de Gênes, datant du 14<sup>ème</sup> siècle, a inspiré cette nouvelle gamme de lampes qui ajoutera de l'intérêt visuel à tout espace. La structure en laiton brossé et l'abat-jour en suspension apportent une lumière douce qui rend chaleureux votre pièce. Disponible en versions lampe de table et lampadaire.*





Olaf  
Armchair - Wood Base



Olaf  
Armchair - Steel Base

Olaf has a decidedly vintage look and is part of a family of three contemporary armchairs, along with our Didrik and Fede models. All three have the same level of comfort and exceptional lumbar support. Their aesthetics may be changed according to the choice between either a wood or rotating metal base.



## IGNACIO

The sinewy curves of Ignacio dynamise any space.

Why go geometric when one can embrace one's curves? The sinewy curves of Ignacio will add new dimensions and dynamism to any space.

This sofa works well on its own, even better in pairs and beyond... Ignacio is available in three standard sizes and limitless possibilities for fabrics and leathers.

*Les courbes subtiles d'Ignacio dynamisent n'importe quel espace.*

*Pourquoi choisir de la géométrie quand on peut célébrer ses formes? Les courbes subtiles d'Ignacio ajouteront de nouvelles dimensions et du dynamisme à n'importe quel espace.*

*Ce canapé fonctionne parfaitement tout seul, encore mieux en paire ou même plus... Ignacio est disponible en trois tailles standards avec des possibilités infinies en tissu ou cuir.*



These pages. Ignacio with Koroa and Oskar coffee tables, Giacomo floor lamps, Zeppelin suspension lamps and Réalité framed print.



These pages. Ignacio sofas with Oskar coffee tables, Dune side table, Lupa side table with Turia table lamp, Savigny table lamp and Aspidistra framed print.

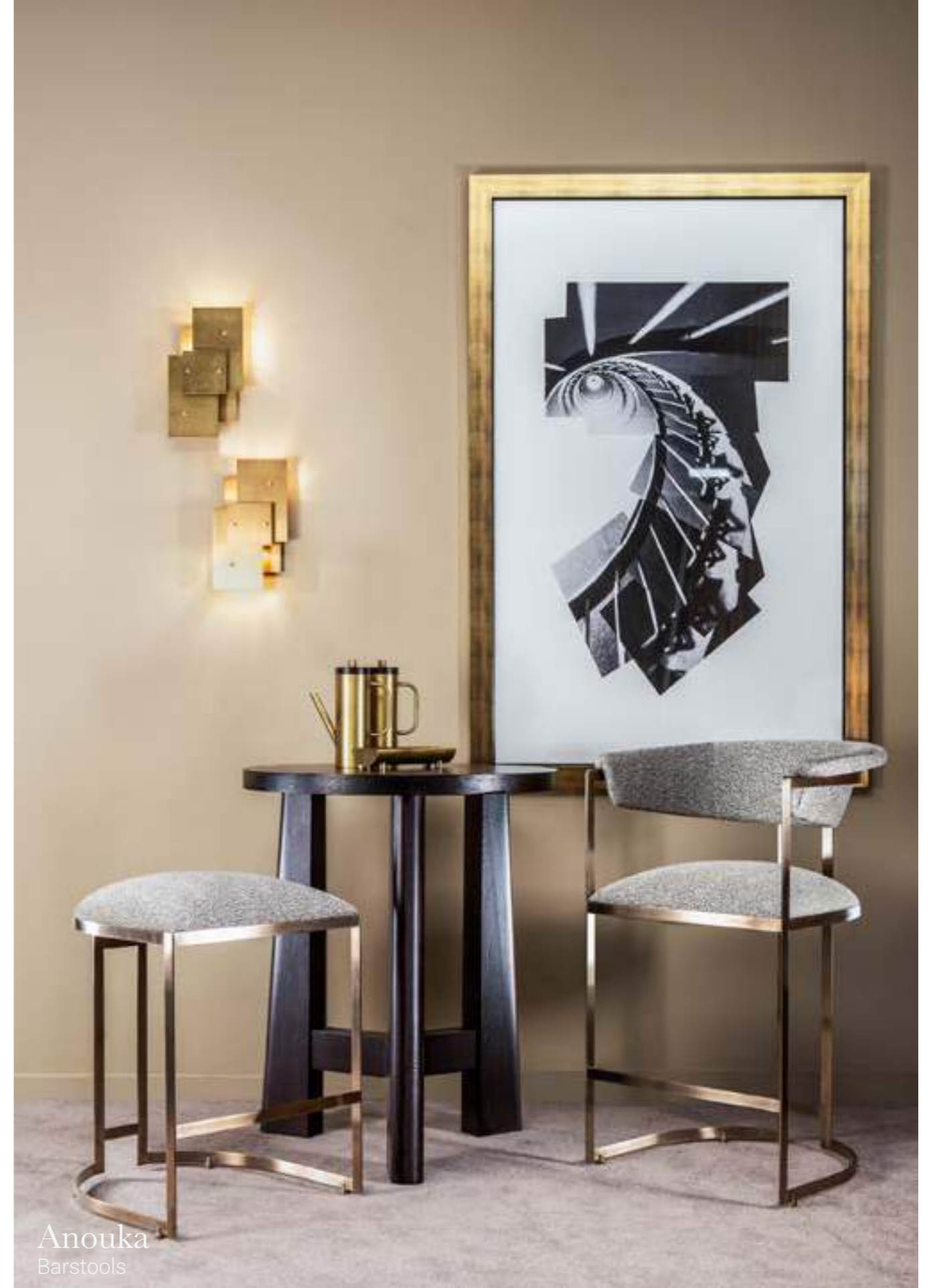


These pages. Ignacio medium and large sofas with Helika cocktail table, Cosmos cocktail table, Tenoch sideboard, Brenta table lamp, Apollo suspension lamps, Seicenta floor lamp and Greta framed prints. Révolution Industrielle wallpaper.



Costa & Constanza  
Barstools

With several barstool options in the range, your biggest issue will be picking your favourite.



Anouka  
Barstools



Rafaela  
Round Dining Table

Our Rafaela table provides several different seating options from round to rectangular to bar table. Its beautiful brushed oak top and solid legs with subtle detailing make it an ideal piece both in terms of functionality and aesthetics. It is perfectly complemented by our Costanza chairs as well as other elements according to your specific preference.



Rafaela  
Rectangular Dining Table



BEHIND  
THE  
SCENES

ANOUKA  
barstool

We love integrating touches of gold in our creations, and this also applies to seating! These new Anouka barstools are absolutely stunning in brass effect on stainless steel and can make any bar area rather seductive. Available in two versions with and without backrest.

*Nous aimons intégrer des touches dorées dans nos créations, et ceci s'applique également aux sièges ! Ces nouveaux tabourets de bar Anouka sont absolument superbes en effet laiton sur acier inoxydable et apportent beaucoup de charme à un espace bar. Disponible en deux versions avec et sans dossier.*





Anouka armchairs in brass effect on stainless steel bring the perfect touch of gold to any space.



Anouka  
Armchair



Dorotea Armchair  
Fullerton Low Cabinet  
Inès Table  
Donato Pouf  
Itza Wall Sconces  
Medusa Vertical Table Lamp



Inspired by Milanese bar chairs of the 1970s and the Austrian style of Josef Hoffman, the Dorotea chair finds its place clearly in the 21<sup>st</sup> century.



Dorotea  
Armchair

# ECLECTIC

For us, eclecticism is the intelligent mix of objects, whether of different origins, materials, epochs or styles. It is key to telling a story with your interior. Our collection brings together many eclectic pieces that work well together and play off pieces you may already have, allowing you to write a better story for your own interior.

*ÉCLECTISME . Selon nous, l'éclectisme est le mélange intelligent d'objets, qu'ils soient d'origines, de matériaux, d'époques ou de styles différents. C'est la clé de l'élaboration d'une histoire propre à votre intérieur. Notre collection réunit plusieurs pièces éclectiques qui se combinent bien ensemble et qui peuvent s'harmoniser avec celles que vous avez déjà, vous permettant d'écrire l'histoire d'un intérieur qui vous ressemble.*

EVERY  
INTERIOR  
A STORY





Archibald  
Sofa



Appia  
Suspension Lamp



Nymphéa  
Sculpted Table



Manolo  
Coffee Table



## INÈS

Our Inès table distinguishes itself with its stunning hammered resin base.

Usually seen in gold with a rich sunburst veneer surface in Cognac walnut or Espresso oak, it can also be done in a variety of RAL colours and other exotic woods such as Imbuia or Radica.

It is available in round and oval versions in various standard or custom sizes. Its simpler smooth version is a sleeker contrast to the hammered version.

*Notre table Inès se distingue par sa base en résine martelée.*

*Généralement en version dorée avec sa riche surface en placage étoile en noyer Cognac ou chêne Espresso, elle peut également être réalisée dans une variété de couleurs RAL et d'autres bois exotiques tels que l'Imbuia ou le Radica.*

*Elle est disponible en versions ronde et ovale, dans différentes tailles standard ou personnalisées. La version simple en base lisse est une douce alternative à la version martelée.*



Inès  
Round Dining Table



This page. Eugénie armchair with Inès hammered dining table. Elis side tables, Fita console and Fullerton low cabinet with Tenoch wall panels. Ucles table lamp and wall appliques, Zeppelin suspension lamps, Greta and Escargot framed prints. Facing page. Eugénie armchair with Inès hammered dining table. Saigon screen with Amadeo floor lamp, Zeppelin suspension lamps and Escargot framed print.





Inès  
Oval Dining Table



Turia  
Suspension Lamps



Constanza  
Dining Chair



Penelope  
Dining Bench

Ida Armchair Steel Base  
Itza Wall Sconces  
Hoffman Coffee Table





**Ida**  
Armchair - Wood Base



**Ida**  
Armchair - Steel Base

The daring curves of our Ida armchair in either wood or rotating steel or brass effect base will bring dynamism to your interior.

# RELAXED

Comfort can never be forgotten in the quest for elegance, and our pieces are comfortable wherever one may find them... We play with something we call "relaxed elegance" in our collection. Our objective is to promote comfort and make it a fundamental in the quest to create the story of your interior.

*DÉTENTE . Le confort ne doit jamais être oublié dans la quête de l'élégance, et nos pièces sont confortables où que l'on puisse les trouver... Nous aimons travailler un concept que nous appelons «l'élégance décontractée» dans notre collection. Notre objectif est de valoriser le confort et le rendre fondamental dans la quête d'un intérieur qui vous ressemble.*

EVERY  
INTERIOR  
A STORY





Plenty of seats to choose from be they high or low backed. We have what you need to create the perfect topography for your space.





Thais  
Lounge Chair

Small footprint lounge chairs are perfect for living or bedroom spaces. They work great alone or in pairs.



Fiona  
Lounge Chair

BEHIND  
THE  
SCENES

# BRASILIO

sideboard

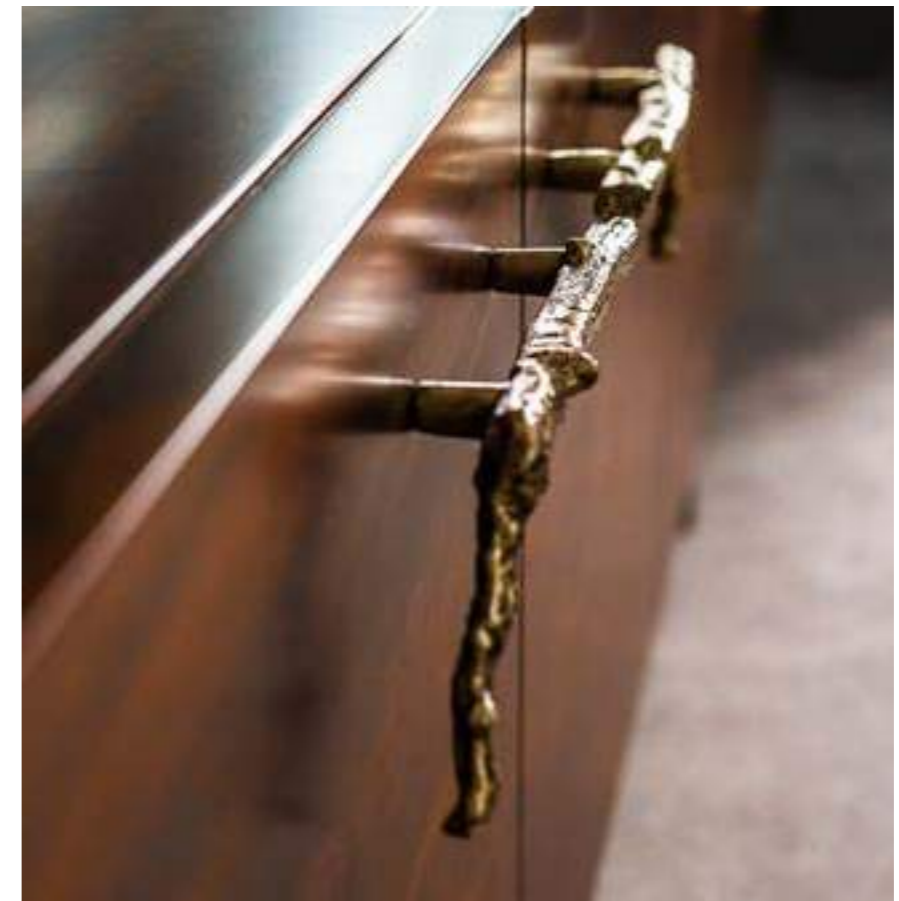
Imbuia wood is also known as "Brazilian walnut". It is a very organically textured material that showcases natural beauty. With its imbuia veneers and sculpted cast brass handles, Brasilio is a stunning storage piece that is as practical as it is aesthetically pleasing.

*Le bois d'Imbuia est également appelé le « noyer brésilien ». C'est un matériau très organique et texturé qui révèle la beauté de la nature. Avec son placage imbuia et ses poignées sculptées en fonte de laiton, Brasilio est un superbe meuble de rangement aussi pratique qu'esthétique.*





Brasilio  
Sideboard



With its imbuia veneers and sculpted cast brass handles, Brasilio is a stunning storage piece that is as practical as it is aesthetically pleasing.



# HANDMADE

Our creations are the fruits of an alliance between the designer and the artisan, each equally passionate about their crafts. Handmade details, like our cast Nymphéa table inspired by nature, are both a luxury and an essential part of the story of your own interior.

*ARTISANAT . Nos créations sont le fruit d'une alliance entre le créateur et l'artisan, chacun passionné par son métier. Les détails «fait-main» ou artisanaux, comme notre table en fonte Nymphéa inspirée par la nature, sont à la fois un luxe et un essentiel pour créer l'histoire d'un intérieur qui vous ressemble.*

EVERY  
INTERIOR  
A STORY



# TENOCH

The Tenoch brings visual interest to any space.

Inspired by the Aztec pyramids of Tenochtitlan, the Tenoch cabinet and sideboard bring visual interest to any space.

These stunning storage pieces are made in Espresso finish oak veneer, which combines to perfection with their layered brass door facades and cast brass legs and handles.

*Le Tenoch apportera de l'intérêt visuel à tout espace.*

*Inspirés par les pyramides Aztèques de Tenochtitlan, le cabinet et buffet Tenoch apporteront de l'intérêt visuel à tout espace.*

*Ces meubles de rangement séduisants sont plaqués chêne finition Espresso et leurs façades de portes en lames de laiton se combinent à merveille avec leurs piètements et poignées en fonte de laiton.*



Tenoch  
Sideboard



Tenoch  
Cabinet

Facing page. Tenoch sideboard. Zeppelin suspension lamps, Savigny table lamp and Escargot framed print. This page. Tenoch cabinet and Anouka lounge chair. Amedeo floor lamp, Isoard table lamp, Tikal wall applique and Caleidoscópico framed print.



Helika  
Dining Table



Saigon  
Screen



Dita  
Table Lamp



Majken  
Dining Chair

BEHIND  
THE  
SCENES

# VESUVIA

low table

We adore gold accents, and the Vesuvia table brings the perfect blend of simplicity and elegance. Its Stavia gilded glass top will brighten any interior.

*Nous adorons les accents dorés et la table Vesuvia offre un mélange parfait de simplicité et d'élégance. Son plateau en verre doré Stavia illuminera tout intérieur.*





Tenoch  
Screen



Pompeia  
Tables



Donato  
Pouf



Penelope  
Bench



Penelope  
Bench

Our Penelope range brings comfort as well as visual lightness with its bench and barstool versions.



Penelope  
Barstools



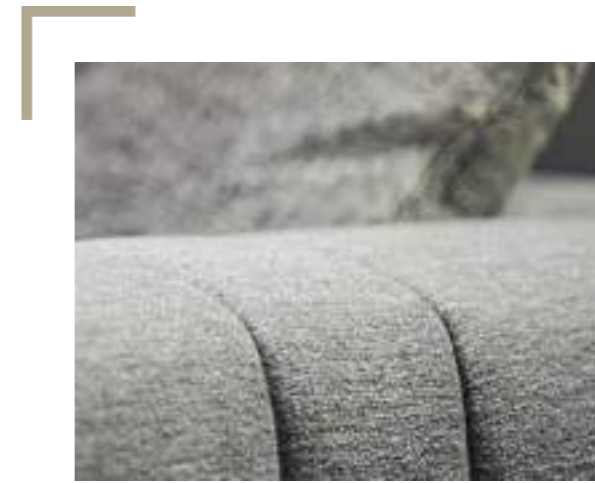
Oleg  
Sofa

A 1940s inspired curved sofa and armchair, Oleg brings a stylish touch to any space.



Oleg  
Lounge Chair





## LAPO

The objective behind Lapo was to bring together geometry and curves.

An incredibly comfortable sofa, its asymmetrical cylinders on the sides and back along with the rounded seat cushions and armrests are slightly reminiscent of 1970s Milanese cosmopolitan style.

This sofa is available in a 3-seater fixed version, a sofa bed version and a system made up of 10 different modules, allowing one to personalise its size and form to each space. It is an ideal sofa in which to relax and unwind.

*L'ambition derrière le modèle Lapo est de réunir la géométrie et l'arrondi.*

*Un canapé incroyablement confortable, l'asymétrie des cylindres des côtés et du dossier ainsi les coussins et accoudoirs galbés suggèrent le style cosmopolite milanais des années 1970.*

*Ce canapé est disponible dans une version fixe 3 places, une version canapé-lit et en système composable de 10 modules différents à associer entre eux, permettant de personnaliser les dimensions et le dessin dans chaque espace. Ce canapé est idéal pour se détendre et oublier le monde extérieur.*



These pages. Lapo sofa module 2.1, corner, pouf and module 1.1, Solata armchair with Silas cocktail table, Mantua side table, Apollo suspension lamps, Bracket table lamp, Medusa horizontal table lamp, Giacomo floor lamp, Uxmal wall applique, Machu Picchu screen, Machu Picchu panel and Lapo tray.



Lapo sofa module 2.1 and chaise longue left. Aurea floor lamp and Ippolita floor lamp.



These pages. Lapo sofa and Donato stools with Mantua and Ugo side tables. Mántida cocktail table, Zeppelin suspension lamps, Uxmal wall applique, Medusa horizontal table lamp Five O'Clock and Vagues framed print.



Lapo  
Bed



An extension of our geometric sofa range, our Lapo bed brings a plush upholstered structure with subtle detailing.

## BEHIND THE SCENES

# OTERO

## armchair

A surprising armchair, Otero brings transparency and visual lightness while providing a rather comfortable seat. An ideal product to create a statement, it is a perfect addition to dynamise any space. It may also be grouped in modules of two, three or more to make a curved sofa.

*Otero est un fauteuil surprenant, qui apporte à la fois une transparence étonnante et une légèreté visuelle, avec une assise confortable. Un produit idéal à mettre à l'honneur pour ajouter une belle dynamique à n'importe quel espace. Il peut également être regroupé en modules de deux, trois ou plus pour former un canapé arrondi.*





Our Teodoro chair shows just how much we can do with metal. Bringing a beautiful contrast to any space, Teodoro is surprisingly comfortable as well!



Teodoro  
Lounge Chair



Barocco  
Stool

Mixing styles, cultures, epochs and materials, Hamilton Conte products bring eclecticism to any space.



Fullerton  
Cabinet





Silas  
Console



Bracket  
Table Lamp



Aurea  
Floor Lamp



Nico  
Armchair

# COSMOPOLITAN

We merge design movements from the 1950s, 1960s and 1970s, the Americas and Europe, while adding a touch of Parisian flair. Our cosmopolitan approach is about richly layered interiors comprised of distinctive pieces that help craft the story of your own interior.

*COSMOPOLITE . Nous fusionnons des mouvements du design des années 1950, 1960 et 1970, des influences outre-Atlantique et européennes, en ajoutant une touche d'élégance parisienne. Cette approche cosmopolite favorise des intérieurs riches, composés de pièces qui se distinguent, vous aidant à créer l'histoire d'un intérieur qui vous ressemble.*

EVERY  
INTERIOR  
A STORY

Teodoro lounge Chair  
Tenoch Open Screen  
Lupa Side Table  
Ugo Side Table  
Turpan Table Lamp  
3 Sisters  
Lucinda Stool  
Révolution Industrielle Wallpaper



Albers  
Cabinet



Wood and gold are the perfect combination to bring warmth and richness to any interior. Our Albers cabinet combines seamlessly a patterned Ebony marquetry with a stunning asymmetrical brass effect base.



Taxco  
Console



Milos  
Table Lamp



Uxmal  
Wall Sconce



Aspidistra  
Framed Print



Arken  
Cabinet

The doors of our Arken model rise up and fall back to its structure. Divided by inserted handles with cast brass accents, it is an elegant addition to any interior. Our 4-door sideboard has been complemented by a new 2-door cabinet allowing this stunning design to fit into a variety of spaces.



Arken  
Sideboard



Ludvig is the ideal example of our quest for mastery of the perfect seat. Its complex upholstery process ensures that fabrics hold perfectly to its form.



Ludvig  
Lounge Chair



## DON IGNACIO

Don Ignacio adapts to any space.

Even more curves to embrace with the Don Ignacio sectional sofa! This sofa brings endless configurations to adapt to any space.

Its signature curvature softens the stark geometry of most spaces and its comfort will make you never want to leave it.

*Don Ignacio s'adapte à tout espace.*

*Encore plus de formes à explorer avec le canapé modulaire Don Ignacio ! Ce sofa réunit des configurations multiples pour s'adapter à chaque espace.*

*Ses courbes signatures apportent un peu de fantaisie à la sobriété géométrique de certains intérieurs et son confort vous invitera à vous y installer longtemps.*



These pages. Don Ignacio sofa module 1 left, corner, connector large, corner and module 1 right with Oskar cocktail table, Dune brass and Dune aluminium, 3 Sisters Lucretia stool. Sultana side table, Manolo high cabinet, Révolution Industrielle screen, Carpathia table lamp, Giacomo floor lamp, Apollo suspension lamps. Orsay, Goseck, Graphic Art n°14 and Red Moon framed prints.





Don Ignacio  
Modular Sofa



Hoffman  
Coffee Table



Nymphéa  
Coffee Table



Taipei  
Floor Lamp



Aramis  
Pouf

We try to create pieces that you will instantly love for your interior!



Blas  
Lounge Chair



Orick  
Console

Carpathia  
Table Lamp



Aramis  
Pouf



Kameo  
Wall Hanging



BEHIND  
THE  
SCENES

# BISCORNET

cabinet

This stunning cabinet is the perfect blend of simplicity and complexity. Its cast brass handles were inspired by the ornate handles of the Notre-Dame cathedral in Paris by Biscornet. Its lacquered structure may be done in any colour imaginable and its gilded wood base highlights the entire piece. Also available with upholstered doors.

*Ce magnifique meuble est l'équilibre parfait entre simplicité et complexité. Ses poignées en fonte de laiton est un héritage des poignées ornées de la cathédrale Notre-Dame de Paris par Biscornet. Sa structure laquée peut être réalisée dans n'importe quelle couleur imaginable et sa base en bois doré met en valeur l'ensemble de la pièce. Egalement disponible avec portes tapissées.*





Biscornet is the perfect blend of simplicity and complexity. Its cast brass handles were inspired by the ornate handles of the Notre-Dame cathedral in Paris.



Biscornet  
Cabinet

# INSPIRED

We seek inspiration everywhere, from different cultures, architecture, fashion, nature... Our Kyril chair is decidedly 1950's, our Mogambo table harks to Africa, Aztec pyramids brought forth the Itza wall sconce and the Eiffel Tower inspired our Révolution Industrielle wallpaper. It is the stories behind each object that enrich the story of your own interior.

*INSPIRATION . Nous cherchons de l'inspiration partout : les différentes cultures, l'architecture, la mode, la nature... Notre fauteuil Kyril est résolument années 1950, notre table Mogambo fait un clin d'œil à l'Afrique, les appliques murales Itza évoquent les pyramides aztèques et notre papier peint Révolution Industrielle incarne notre vision de la Tour Eiffel. C'est l'inspiration derrière chaque objet qui vous donne la richesse nécessaire pour créer l'histoire d'un intérieur qui vous ressemble.*

EVERY  
INTERIOR  
A STORY



Mogambo Cocktail  
Kyril Lounge Chair  
Itza Wall Sconces





Stools are perfect pieces with which to play! They are both practical and fun.





These pages. Barbara sofa, Thai's armchair, Laura armchair with Talos cocktail table, Oskar coffee table and 3 Sisters Lucinda stool. Orick Bookshelf, Cosmos side table, Petra bar table with Turpan table lamp, Callia table lamp, Seicenta floor lamp, Pelikan wall applique, Turia suspension lamp, Peacock screen and New Langues framed print.

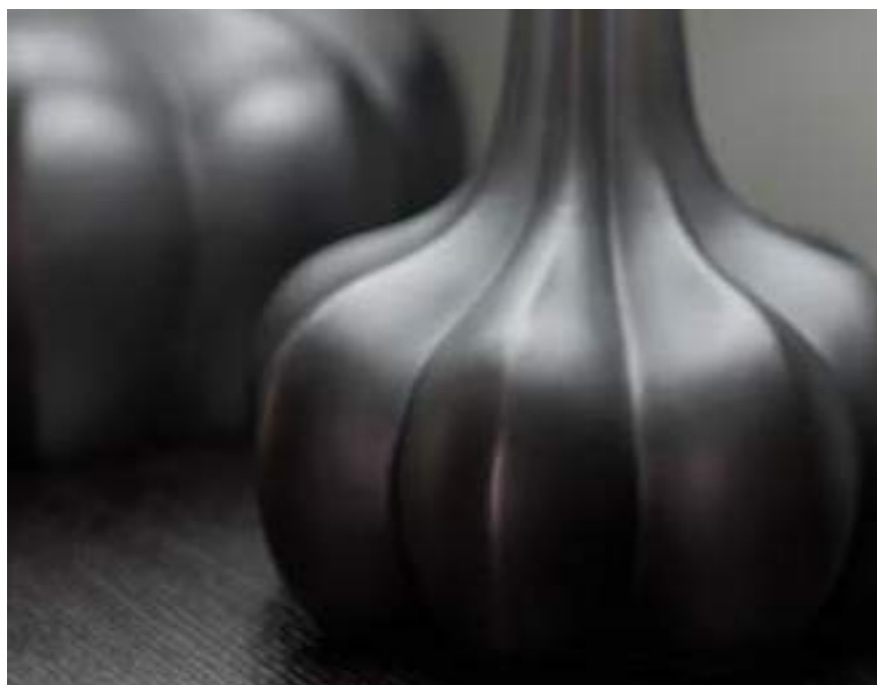




Oskar  
Coffee Table



Cosmos  
Side Table



Callia  
Table Lamp



Barbara  
Sofa

BEHIND  
THE  
SCENES

# IWATANI

## floor lamp

The Iwatani floor lamp playfully casts shadows and gold light. Its enamelled iron frame and brushed brass plates combine for a perfect combination of colours and materials.

Le lampadaire Iwatani joue avec ombre et lumière. Son encadrement en fer émaillé avec ses plaques en laiton brossé s'associent pour un équilibre parfait de couleurs et de matériaux.





The most difficult part of our collection will be choosing which piece you like best!





A sleek and simple structure with choice of two cylindrical headboard options, our Lazaro bed is ideal for mixing materials like leather and velvet as we have done.



Lázaro  
Bed





HAMILTON CONTE  
PARIS

Product Directory

For complete product information, please consult:  
*Pour des informations produit plus complètes, veuillez consulter :*

[www.hamiltonconte.com](http://www.hamiltonconte.com)



# Armchairs Fauteuils



**Agathon**

w.100 x d.95 x h.115 / sh. 42



**Blas**

Armchair: w.86 x d.93 x h.100/ sh.42  
Ottoman: w.71 x d.42 x h.42



**Charles**

w.70 x d.88 x h.98 / sh. 42



**Dorotea**

w.68 x d.64 x h.74 / sh. 42



**Anouka**

w.75 x d.70 x h.73 / sh. 46



**Casimir**

w.79 x d.79 x h.79 / sh. 42



**Charlotte**

w.62 x d.83 x h.88 / sh. 42



**Enzo**

Armchair: w.80 x d.94 x h.107 / sh. 42  
Ottoman: w.64 x d.50 x h.40



**Arture**

w.75 x d.86 x h.80 / sh. 42



**Céline**

w.65 x d.78 x h.77 / sh. 42



**Colette**

w.60 x d.70 x h.72 / sh. 42



**Fede - wood base**

Armchair: w.85 x d.90 x h.105 / sh. 42  
Ottoman: w.64 x d.50 x h.40



**Constantine**

w.72 x d.80 x h.77 / sh. 42



**Fede - steel base**

Armchair: w.85 x d.90 x h.105 / sh. 42  
Ottoman: w.64 x d.50 x h.40



**Augusto**

w.85 x d.85 x h.90 / sh. 42  
w.70 x d.70 x h.85 / sh. 42



**Céline armchair**

w.70 x d.79 x h.78 / sh. 42



**Didrik - wood base**

Armchair: w.80 x d.90 x h.105 / sh. 42  
Ottoman: w.60 x d.43 x h.40



**Fiona**

Armchair: w.55 x d.80 x h.105 / sh. 42  
Ottoman: w.57 x d.47 x h.42



**Barnabas**

w.140 x d.115 x h.85 / sh. 42



**Celedónio**

w.77 x d.82 x h.85 / sh. 42



**Didrik - steel base**

Armchair: w.80 x d.90 x h.105 / sh. 42  
Ottoman: w.60 x d.43 x h.40



**Gabbo**

w.105 x d.100 x h.90 / sh. 42



**Gabriel**

w.88 x d.80 x h.92 / sh. 42



**Kyril**

w.65 x d.90 x h.100 / sh. 42



**Nico**

Armchair: w.80 x d.90 x h.90 / sh. 42  
Ottoman: w.60 x d.45 x h.42



**Solata**

w.75 x d.71 x h.77 / sh. 42



**Ida - wood base**

Armchair Large: w.100 x d.98 x h.112 / sh. 42  
Armchair Small: w.90 x d.88 x h.102  
Ottoman: w.64 x d.60 x h.40



**Laura**

w.82 x d.100 x h.80 / sh. 42



**Olaf - wood base**

Armchair: w.92 x d.90 x h.95 / sh. 42  
Ottoman: w.64 x d.50 x h.40



**Teodoro**

w.64 x d.74 x h.65 / sh. 42



**Ida - steel base**

Armchair Large: w.100 x d.98 x h.112 / sh. 42  
Armchair Small: w.90 x d.88 x h.102  
Ottoman: w.64 x d.60 x h.40



**Lázaro**

w.78 x d.95 x h.82 / sh. 42



**Olaf - steel base**

Armchair: w.92 x d.90 x h.95 / sh. 42  
Ottoman: w.64 x d.50 x h.40



**Thaïs**

w.60 x d.70 x h.72 / sh. 42



**Inga**

w.100 x d.91 x h.105 / sh. 42



**Leopoldo**

w.70 x d.70 x h.66 / sh. 42



**Oleg**

w.90 x d.92 x h.80 / sh. 42



**Umberto**

w.82 x d.82 x h.70 / sh. 42



**Irène**

Armchair: w.95 x d.95 x h.115 / sh. 42  
Ottoman: w.64 x d.50 x h.40



**Ludvig**

w.85 x d.85 x h.78 / sh. 42



**Otero**

w.82 x d.93 x h.88 / sh. 45



**Ursula**

Armchair: w.70 x d.80 x h.110 / sh. 42  
Ottoman: w.60 x d.45 x h.42



**Isadora**

Armchair: w.66 x d.80 x h.110 / sh. 42  
Ottoman: w.60 x d.45 x h.42



**Maximo**

Armchair: w.80 x d.90 x h.90 / sh. 42  
Ottoman: w.60 x d.45 x h.42



**Sigrid**

w.78 x d.92 x h.115 / sh. 42



**Windsor chair**

w.80 x d.80 x h.105 / sh. 42



# Sofas Canapés



**Archibald**  
w.245 x d.105 x h.90 / sh. 42



**Enzo 3P**  
w.230 x d.94 x h.107 / sh. 42



**Ignacio small**  
w.170 x d.100 x h.85 / sh. 42



**Lázaro chaise longue**  
w.140 x d.95 x h.82 / sh. 42



**Ignacio medium**  
w.215 x d.110 x h.85 / sh. 42



**Lexington**  
w.240 x d.110 x h.85 / sh. 42



**Arture 2P**  
w.160 x d.92 x h.80 / sh. 42



**Gabbo 2P**  
w.170 x d.105 x h.90 / sh. 42



**Ignacio large**  
w.260 x d.120 x h.90 / sh. 42



**Madison**  
w.230 x d.100 x h.85 / sh. 42



**Barbara**  
w.240 x d.100 x h.82 / sh. 42



**Gabbo 3P**  
w.245 x d.105 x h.90 / sh. 42



**Lapo sofa / sofabed**  
w.250 x d.110 x h.65 / sh. 42



**Oleg**  
2P. w.164 x d.94 x h.78 / sh. 42  
3P. w.224 x d.94 x h.78 / sh. 42



**Barnabas**  
w.230 x d.107 x h.82 / sh. 42



**Gabriel 2P**  
w.170 x d.105 x h.92 / sh. 42



**Lapo system**  
See pages / voir pages : 146-147



**Soho**  
w.200 x d.100 x h.85 / sh. 42



**Don Ignacio modular**  
See pages / voir pages : 144-145



**Gabriel 3P**  
w.230 x d.105 x h.92 / sh. 42



**Lázaro 2P**  
w.140 x d.95 x h.82 / sh. 42



**Tribeca**  
w.230 x d.100 x h.85 / sh. 42



**Enzo 2P**  
w.156 x d.94 x h.107 / sh. 42



**Gramercy**  
w.220 x d.95 x h.74 / sh. 42



**Enzo 3P**  
w.200 x d.95 x h.82 / sh. 42



**Windsor bench**  
tw.155 x d.80 x h.110 / sh. 42

Don Ignacio modular sofa concept



Don Ignacio: a few possible configurations



Module 1 (Left) + Module 2 (Right)



Module 1 (Left) + Connector S + Module 2 (Right)



Module 2 (Left) + Connector S + Module 2 (Right)



Module 1 (Left) + Connector S + Module 1 (Right)

Don Ignacio modules



Module 1 left  
w.175 x d.110 x h.90



Module 1 right  
w.175 x d.110 x h.90



Module 2 left  
w. 130 x d.175 x h.90



Module 2 right  
w.130 x d.175 x h.90



Corner  
w.115 x d.115 x h.91



Connector S  
w.120 x d.90 x h.80



Connector L  
w.200 x d.90 x h.91



Module 1 (Left) + Corner + Module 1 (Right)



Module 2 (Left) + Connector L + Corner + Module 1 (Right)



Module 2 (Left) + Connector S + Corner + Connector S + Module 2 (Right)



Module 1 (Left) + Corner + Connector L + Corner + Module 1 (Right)

Lapo system



Lapo: a few possible configurations



Sofa & Sofa Bed



Module 1.0 Left + Module 1.0 Right + optional leather armrest



Module 2.1 Left + Module 1.0 Right + optional leather armrest



Module 2.1 Left + Pouf + Module 1.1 Right

Lapo modules



Module 1.1 left  
w.125 x d.110 x h.65



Module 1.0 right + optional leather armrest  
w.100 x d.110 x h.65



Module 2.1 left  
w. 225 x d.110 x h.65



Chaise  
w.125 x d.175 x h.65



Corner  
w.145 x d.1425 x h.65



Pouf  
w.65 x d.110 x h.42



Module 1.1 left + Pouf + Module 1.0 Right + optional leather armrest



Chaise + Module 2.1 Right



Module 2.1 Left + Corner + Module 1.0 Right + optional leather armrest



Module 2.1 Left + Corner + Module 1.0 + Pouf + Module 1.0 + Corner + Module 2.1 Right



# Chairs & Poufs

## Chaises & Poufs



**Aramis**  
ø40 x h.46 / sh. 46



**Costa armchair**  
w.60 x d.60 x h.85 / sh. 48



**Dorotea**  
w.58 x d.57 x h.77 / sh. 48



**Leopoldo chair**  
w.50 x d.55 x h.90 / sh. 48



**Atanásio**  
w.120 x d.70 x h.46



**Costanza**  
w.56 x d.60 x h.85 / sh. 48



**Eugénie**  
w.55 x d.60 x h.80 / sh. 48



**Majken**  
w.58 x d.52 x h.74 / sh. 48



**Babette**  
w.60 x d.40 x h.44 / sh. 44



**Costanza**  
w.56 x d.60 x h.85 / sh. 48



**Eugénie armchair**  
w.60 x d.60 x h.80 / sh. 48



**Manolo**  
w.70 x d.50 x h.44 / sh. 44



**Barocco**  
w.88 x d.46 x h.55 / sh. 48



**Costanza armchair**  
w.60 x d.60 x h.85 / sh. 48



**Flor**  
w.60 x d.60 x h.80 / sh. 48



**Marengo**  
w.62 x d.41 x h.46 / sh. 46



**Catarina**  
w.50x d.55 x h.90 / sh. 48



**Dagmar**  
w.48 x d.62 x h.82 / sh. 48



**Gunilla**  
w.50 x d.55 x h.82 / sh. 48



**Napoleon**  
w.75 x d.75 x h.45 / sh. 45



**Costa**  
w.56 x d.60 x h.85 / sh. 48



**Dagnia**  
w.45 x d.54 x h.95 / sh. 48



**Imelda**  
w.69 x d.67 x h.83 / sh. 48



**Philippa**  
w.50 x d.55 x h.90 / sh. 48



**Donato**  
w.ø55 x h.48



**Joséphine**  
w.60 x d.61 x h.73 / sh. 48



**Quadra**  
w.48 x d.56 x h.90 / sh. 48



**Sofia**

w.62 x d.50 x h.90 / sh. 48



**Taba**

w.60 x d.40 x h.44 / sh. 40



**Tanai**

w.61 x d.40 x h.53 / sh. 50



**Vania**

w.70 x d.65 x h.76 / sh. 48



**Victoria**

w.50 x d.55 x h.90 / sh. 48



# Barstools & Benches Tabourets & Banquettes



**Anouka stool**

w.56 x d.55 x h.108 / sh. 76  
w.56 x d.55 x h.98 / sh. 66



**Ona**

w.120 x d.60 x h.80 / sh. 48  
w.140 x d.60 x h.80 / sh. 48  
w.160 x d.60 x h.80 / sh. 48



**Anouka barstool**

w.65 x d.62 x h.108 / sh. 76  
w.55 x d.45 x h.78 / sh. 66



**Penelope barstool**

w.58 x d.56 x h.104 / sh. 76  
w.58 x d.56 x h.94 / sh. 66



**Costa barstool**

w.56 x d.55 x h.108 / sh. 76  
w.56 x d.55 x h.98 / sh. 66



**Penelope**

w.164 x d.65 x h.84 / sh. 48



**Costanza barstool**

w.56 x d.55 x h.108 / sh. 76  
w.56 x d.55 x h.98 / sh. 66



**Penelope curved**

w.200 x d.80 x h.84 / sh. 48



**Chelsea**

w.140 x d.40 x h.45 / sh. 45



**Uma**

w.46 x d.51 x h.107 / sh. 76  
w.46 x d.51 x h.97 / sh. 66



**Leopoldo barstool**

w.47 x d.51 x h.106 / sh. 76  
w.47 x d.51 x h.96 / sh. 66



# Beds Lits



Lapo  
w.200 x d.235 x h.105



Lázaro  
w.175 x d.220 x h.104



# Coffee Tables Tables Basses



Arhus round  
ø100 x h.45



Arhus rectangular  
w.100 x d.50 x h.45



Arhus square  
w.100 x d.100 x h.45



Astoria  
w.120 x d.70 x h.45



Atela  
ø80 x h.46



Calixta cocktail  
ø100 x h.45



Cosmos cocktail S  
ø50 x h.37



Cosmos cocktail L  
ø74 x h.42



Dalian  
w.120 x d.70 x h.40



Etna cocktail  
w.120 x d.65 x h.52



Etra cocktail  
ø70 x h.48  
ø70 x h.42  
ø70 x h.35



Helika cocktail  
ø80 x h.47



**Hoffman**  
ø88 x h.46  
ø105 x h.46



**Mogambo cocktail**  
w.80 x d.60 x h.35



**Pompeia cocktail**  
ø70 x h.50  
ø70 x h.40



**Jasper**  
w.90 x d.50 x h.33  
w.120 x d.70 x h.40  
w.150 x d.90 x h.40



**Sultana cocktail**  
w.70 x d.70 x h.42



**Silas cocktail**  
w.160 x d.80 x h.42



**Koroa**  
ø100 x h.45  
ø80 x h.45



**Nola**  
ø80 x h.46



**Talos cocktail**  
ø80 x h.48



**Lusitanian**  
ø80 x h.33  
ø100 x h.40



**Nymphèa oval**  
w.72 x d.40 x h.41



**Tirrena**  
w.120 x d.50 x h.45  
w.100 x d.100 x h.45



**Manolo cocktail**  
w.90 x d.90 x h.42



**Nymphèa round**  
w.70 x h.47



**Turner round**  
ø100 x h.45



**Mántida**  
ø71 x h.46  
ø71 x h.38



**Orick cocktail**  
w.100 x d.50 x h.42



**Vesuvia**  
w.120 x d.70 x h.40



**Mantua cocktail**  
w.140 x d.70 x h.42



**Oskar**  
ø82 x h.40  
ø82 x h.50



# Side Tables Tables d'appoint



**3 Sisters**  
ø29 x h.45  
Lucinda  
Lucretia  
Dot



**Agda**  
ø40 x h.58  
ø50 x h.60



**Amedeo**  
ø40 x h.60



**Annam**  
w.60 x d.50 x h.50 - 1 drawer  
w.60 x d.50 x h.65 - 2 drawer



**Arthus side**  
ø50 x h.60



**Brass Rings**  
w.45 x d.45 x h.48



**Cosmos side**  
ø80 x h.73



**Dune**  
ø50 x h.47  
ø50 x h.42



**Eleonora**  
w.45 x d.45 x h.60



**Elis**  
ø31 x h.73



**Etna side**  
ø47 x h.66



**Etra**  
ø40 x h.52  
ø50 x h.62



**Eva**  
w.72 x d.44 x h.66



**Inès side**  
ø53 x h.71



**Iva**  
ø50 x h.72



**Lupa**  
ø50 x h.47  
ø50 x h.66



**Mantua side**  
w.100 x d.40 x h.50



**Mogambo**  
w.50 x d.35 x h.50



**Nymphèa side**  
ø40 x h.66



**Orick 1-drawer**  
w.50 x d.40 x h.50



**Orick sofa side**  
w.45 x d.45 x h.55



**Orick side**  
w.60 x d.45 x h.42



**Pompeia side**  
ø42 x h.56



**Samson**  
w.70 x d.50 x h.50



**Saint Martin**  
ø30 x h.42



**Saint Martin XL**  
ø40 x h.60





**Sultana side**  
w.50 x d.50 x h.52



**Tadea**  
w.70 x d.40 x h.63



**Talin**  
ø40 x h.51



**Théa side**  
ø40 x h.50



**Tulum**  
w.50 x d.50 x h.65



**Turner side**  
ø50 x h.60



**Ugo**  
w.40 x d.40 x h.50



# Tables



**Agda bar**  
w.70 x d.70 x h.76  
ø70 x h.76



**Helika dining**  
ø110 x h.76



**Arhus dining**  
w.160 x d.100 x h.76  
w.200 x d.100 x h.76



**Inès smooth**  
ø120 x h.76  
ø160 x h.76  
ø200 x h.76



**Brankus**  
w.70 x d.70 x h.66/76  
ø70 x h.66/76



**Inès oval**  
w.160 x d.90 x h.76  
w.200 x d.100 x h.76



**Calixta dining**  
ø100 x h.76  
ø120 x h.76



**Matilda**  
ø120 x h.76  
ø160 x h.76



**Carlyle**  
ø160 x h.76



**Petra**  
ø110 x h.76



**Etna**  
ø80 x h.76



**Pompeia bar/dining**  
ø80 x h.66/76  
ø100 x h.66/76



**Pterodactyl**  
ø70 x h.60



**Taxco console**  
w.160x d.40 x h.80



**Tula dining**  
w.200 x d.100 x h.76  
w.180 x d.90 x h.76  
w.160 x d.90 x h.76



**Rafaela round**  
ø160 x h.76



**Tessa**  
ø60 x h.66/76



**Talos**  
ø80 x h.76  
ø100 x h.76



**Rafaela high bar**  
ø100 x h.100



**Théa bar**  
w.70 x d.70 x h.66/76  
ø70 x h.66/76



**Taxco dining**  
w.200 x d.100 x h.76



**Rafaela rectangular**  
w.200 x d.100 x h.76



**Théa dining**  
w.160 x d.70 x h.66  
w.200 x d.100 x h.76



**Turner**  
w.70 x d.70 x h.66/76  
ø70 x h.66/76  
w.140 x d.70 x h.76



**Silas dining**  
w.200 x d.100 x h.76



**Tila**  
w.70 x d.70 x h.66/76  
ø70 x h.66/76



**Varenne dining**  
w.200 x d.100 x h.76  
w.180 x d.90 x h.76  
w.160 x d.90 x h.76



**Sumatra**  
ø90 x h.76



**Tucson**  
w.70 x d.70 x h.66/76  
ø70 x h.66/76  
w.140 x d.70 x h.76



**Volnay**  
ø70 x h.76



**Talos dining**  
w.200 x d.90 x h.77



**Tula bar**  
w.70 x d.70 x h.66/76  
ø70 x h.66/76  
w.140 x d.70 x h.76



# Desks & Consoles

## Bureau & Consoles



**Arhus console**  
w.140 x d.40 x h.76



**Tula console**  
w.180 x d.40 x h.90



**Fita console**  
w.120 x d.40 x h.85



**Upshaw**  
w.140 x d.60 x h.76  
w.140 x d.40 x h.76



**Nymphéa console S**  
w.90 x d.40 x h.66



**Varenne desk / dining**  
w.160 x d.45/90 x h.76



**Nymphéa console L**  
w.160 x d.40 x h.66



**Volnay desk**  
w.140 x d.50 x h.76



**Orick console**  
w.120 x d.50 x h.76



**Silas console**  
w.140 x d.40 x h.70



# Cabinets & Storage

## Meubles de Rangement



**Albers**  
w.100 x d.46 x h.150



**Biscornet**  
w.100 x d.48 x h.180



**Arhus cabinet**  
w.80 x d.45 x h.150



**Brasilio**  
w.200 x d.46 x h.60



**Arhus sideboard**  
w.160 x d.45 x h.90



**Ceylon**  
w.70 x d.40 x h.140



**Arken cabinet**  
w.100 x d.46 x h.100



**Fullerton high cabinet**  
w.84 x d.46 x h.162



**Arken**  
w.180 x d.46 x h.80



**Fullerton armoire**  
w.90 x d.50 x h.200



**Fullerton low cabinet**  
w.80 x d.44 x h.123



**Orick 4-door cabinet**  
w.120 x d.45 x h.140



**Orick 4-door**  
w.191 x d.46 x h.90



**Fullerton sideboard**  
w.180 x d.48 x h.85



**Orick doors & drawer**  
w.180 x d.45 x h.55



**Tenoch cabinet**  
w.100 x d.46 x h.166



**Manolo cabinet**  
w.90 x d.50 x h.160



**Orick drawers**  
w.180 x d.45 x h.55  
w.150 x d.45 x h.55  
w.100 x d.45 x h.55



**Tenoch sideboard**  
w.192 x d.46 x h.90



**Manolo sideboard**  
w.192 x d.46 x h.90



**Orick bookshelf**  
w.120 x d.40 x h.202  
w.60 x d.40 x h.202



**Orick low cabinet**  
w.96 x d.45 x h.90



**Orick 2-door**  
w.130 x d.45 x h.90



**Orick dresser**  
w.96 x d.45 x h.90



**Orick 3-door**  
w.180 x d.45 x h.90



# Accessories

## Accessoires



**Abeille**  
w.10 x d.6 x h.3  
w.20 x d.12 x h.6



**Apollon mirror**  
ø120 x d.15



**Brandon**  
w.25 x d.11 x h.8



**Crab**  
w.18 x d.19 x h.4



**Delano**  
w.160 x d.3 x h.200



**Dinamarca**  
w.160 x d.3 x h.200



**Dragonfly**  
w.26 x d.16 x h.8



**Five O'Clock**  
ø40 x h.46



**Giana**  
w.54 x d.30 x h.7



**Kameo**  
ø27 x h.6  
ø37 x h.6  
ø41 x h.6



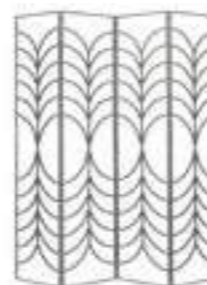
**Lapo tray**  
w.50 x d.28 x h.8



**Machu Picchu screen**  
w.193 x d.5 x h.227



**Nielsen**  
w.40 x d.3 x h.70



**Peacock screen**  
w.185 x d.2 x h.178



**Révolution Industrielle screen**  
w.193 x d.5 x h.227



**Saigon screen**  
w.193 x d.5 x h.227



**Scarab**  
w.15 x d.9 x h.4



**Tenoch closed screen**  
w.200 x d.5 x h.220



**Tenoch open screen**  
w.200 x d.5 x h.220



**Vizcaya**  
w.80 x d.3 x h.80

# Table & Floor Lamps

## Lampes & Lampadaires



Amedeo  
ø50 x h.185



Amedeo lamp  
ø35 x h.80



Aramis  
ø35 x h.54



Argia  
w.30 x d.12 x h.62



Aurea  
ø20 x h.70  
ø20 x h.100  
ø20 x h.130  
ø20 x h.160



Bracket  
w.40 x d.26 x h.53



Brenta  
ø35 x h.66



Callia L  
ø45 x h.67



Callia S  
ø35 x h.47



Carpathia  
ø35 x h.98



Carpathia brass  
ø35 x h.98



Disca  
ø35 x h.91



Dita  
ø40 x h.70



Gaumont  
ø35x103



Genova  
ø25x h.80



Genova  
ø35 x h.180



Giacomo desk  
ø35x h.68



Giacomo table  
ø40 x h.85



Giacomo floor  
ø45 x h.170



Ippolita  
ø50 x h.190



Isoard  
w.40 x d.20 x h.53



Iwatani  
w.35 x d.20 x h.164



Lava  
ø40 x h.72



Saint Martin lamp  
ø35 x h.75



Tilda floor  
w.30 x d.30 x h.180



Medusa horizontal  
ø35 x h.75



Samara  
w.40 x d.19 x h.52



Tilda table  
w.20 x d.20 x h.60



Medusa vertical  
ø35 x h.92



Savigny  
35x h.75



Turia lamp  
ø35 x h.53



Milos  
ø45 x h.82



Seicenta  
ø50 x h.185



Turpan  
ø33x h.22



Minerva  
ø35 x h.90



Taipei  
ø35 x h.200



Ucles  
w.41 x d.14 x h.50



Ptolomea  
w.19 x d.19 x h.38



Themis  
w.45 x d.12 x h.40

# Pendants & Sconces Suspensions & Appliques



**Apollo**  
ø50 x h.50  
ø60 x h.87  
ø70 x h.70



**Appia**  
ø22 x h.26



**Ariane**  
ø30 x h.96



**Beta**  
ø40 x h.20



**Beta gold**  
ø47 x h.22



**Itza**  
w.62 x d.10 x h.35



**Halifax**  
ø15 x h.41



**Moai**  
w.20 x d.14 x h.44



**Ovni**  
ø55 x h.15



**Pala**  
w.15 x d.10 x h.44



**Pelikan**  
w.15 x d.14 x h.47/ sh. 42



**Scarabée**  
w.38 x d.10 x h.20



**Tikal**  
w.21 x d.9 x h.38



**Tilda wall**  
w.35 x d.128 x h.30



**Turia**  
ø09 x h.44



**Ucles**  
ø41 x d.17



**Ucles suspension**  
ø41 x h.26



**Uxmal**  
w.50 x d.15 x h.72



**Kameo single**  
ø36 x h.8



**Kameo double**  
w.36 x d.8 x h.59



**Kameo triple**  
w.58 x d.8 x h.75



**Zeppelin small**  
ø21 x h.82





# Graphic Art & Photography

## Art Graphique & Photographie



Zeppelin large  
ø27 x h.100



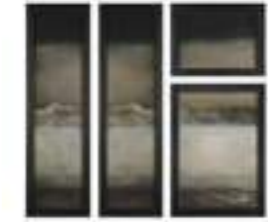
Zeppelin oval  
ø25 x h.50



Zeppelin round  
ø35 x h.35



Alexandre III  
w.75 x d.3 x h.50



Capadócia  
w.56x d.4 x h.43  
w.56x d.4 x h.78  
w.39x d.4 x h.128



Aspidistra  
w.84 x d.3 x h.130



Carota  
w.42 x d.3 x h.53



Bosquet 13  
w.34 x d.3 x h.49



Chomel  
w.58 x d.4 x h.83



Caleidoscopio 1 & 2  
w.68x d.5 x h.88



Debacle  
w.66 x d.4 x h.34



Canelones L & S  
w.53x d.3 x h.38  
w.33x d.3 x h.28



Dolly  
w.78x d.3 x h.63



Don Luís  
w.93x d.4 x h.34



Escargot  
w.115x d.3 x h.180



Graphic art nº 2  
w.55x d.4 x h.67



Graphic art nº 8  
w.68x d.3 x h.68



Dóricas  
w.44x d.4 x h.34



Experiencia  
w.61x d.4 x h.81



Graphic art nº 3  
w.107x d.5 x h.74



Graphic art nº 9  
w.50x d.3 x h.63



Egon Eyes  
w.48x d.3 x h.31



Galleria  
w.130x d.5 x h.210



Graphic art nº 4  
w.64x d.4 x h.64



Graphic art nº 10  
w.45x d.3 x h.37



Eiffel  
w.88x d.4 x h.128



Geisha  
w.53x d.4 x h.84



Graphic art nº 5  
w.32x d.3 x h.41



Graphic art nº 11  
w.59x d.3 x h.44



Electricité  
w.52x d.3 x h.62



Goseck  
w.85x d.5 x h.85



Graphic art nº 6  
w.35x d.3 x h.44



Graphic art nº 12  
w.36x d.3 x h.36



Escalera  
w.87x d.3 x h.127



Graphic art nº 1  
w.56x d.4 x h.99



Graphic art nº 7  
w.45x d.3 x h.39



Graphic art nº 13  
w.80x d.5 x h.91



Graphic art n° 14

w.85x d.5 x h.85  
w.108x d.5 x h.108



Greta

w.20x d.2 x h.40



Gobelino

w.118x d.3 x h.198



Horizonte

w.128x d.3 x h.168



Jacopo

w.40x d.4 x h.230



Kanji n°1

w.95x d.3 x h.200



Kanji n°2

w.75x d.4 x h.105



Kanji n°3

w.75x d.4 x h.105



Kanji n°4

w.104x d.3 x h.65



Kanji n°5

w.68x d.3 x h.52



Kanji n°6

w.78x d.3 x h.62



Langues

w.88x d.4 x h.88  
w.90x d.4 x h.193



Langues triptych

w.90 x d.5 x h.193/unit



Lettres

w.69x d.3 x h.88



Machu Picchu

w.88x d.5 x h.99  
w.148x d.5 x h.178



Main à la Porte

w.67x d.4 x h.108



Mar Azul L & S

w.64x d.3 x h.94  
w.66x d.3 x h.64



Masque

w.67x d.4 x h.91



Meeting

w.115x d.4 x h.34



Mis Chicas

w.38x d.3 x h.32



Nautilus

w.68x d.4 x h.98



Orsay

w.85x d.4 x h.85



Piano

w.28x d.3 x h.78



Pied

w.24x d.3 x h.43



Réalité  
w.130 x d.5 x h.200



Sansui  
w.47 x d.3 x h.47



Wait  
w.47 x d.3 x h.62



Red Moon  
w.85 x d.4 x h.85



Scarabée  
w.59 x d.3 x h.44



Réflexions  
w.52 x d.3 x h.62



Toiture  
w.64 x d.5 x h.94  
w.90 x d.3 x h.134



Révolution Industrielle n° 1  
w.84 x d.5 x h.106



Triangulos  
w.55 x d.3 x h.95



Révolution Industrielle n° 2  
w.84 x d.5 x h.106



Vagues  
w.121 x d.5 x h.160



Romba  
w.57 x d.3 x h.82



Venezia  
w.60 x d.3 x h.38



PHOTOGRAPHY

Fábio Silva  
Giovanni De Sandre  
Francis Amiand

STYLING

Angela Prosdocimi Gianquinto  
Luisa Veronese da Schio  
Janina Gonçalves

GRAPHIC DESIGN

Sónia Dias

PRINT

Orgal

ACKNOWLEDGMENTS

Special thanks to our fabulous teams in Porto and in Paris, and to all our other partners, friends & family for their constant support.



UNIÃO EUROPEIA  
Fundos Europeus Estruturais  
e de Investimento



HAMILTON CONTE  
PARIS

SHOWROOM

50, rue de Babylone  
75007 | Paris - France  
Tel. +33 1 75 57 76 52  
showroom.paris@hamiltonconte.com

SALES SUPPORT + LOGISTICS

sales@hamiltonconte.com  
Tel. +351 224 156 066

PRESS ENQUIRIES

info@alexandrapr.com  
Tel. +33 1 48 58 08 03

[www.hamiltonconte.com](http://www.hamiltonconte.com)



The Hamilton Conte collection is driven by narrative and inspired by stories. We connect to good stories, as they bring us joy. It is the same with our interiors and the objects that surround us. They can represent happy memories, while creating new moments in life that make us smile and feed the soul. Infusing our pieces with positive energy is our goal throughout the entire creative process. We hope that you will find the inspiration to write your own interior story with Hamilton Conte

*La collection Hamilton Conte puise son inspiration dans les histoires. Des liens émotionnels se nouent autour de nos histoires, ce qui nous apporte du bonheur. Cela va de pair avec nos intérieurs et les éléments qui les composent. Ils représentent des souvenirs heureux et créent des moments de vie qui importent et nourrissent l'esprit. Imprégner nos pièces d'énergie positive est notre préoccupation constante tout au long du processus créatif. Nous espérons que vous trouverez l'inspiration pour écrire l'histoire de votre propre intérieur avec Hamilton Conte.*